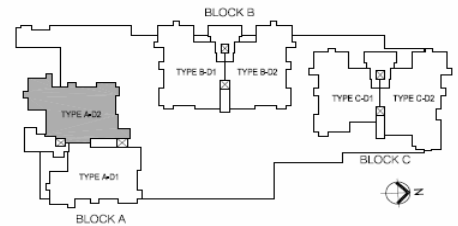
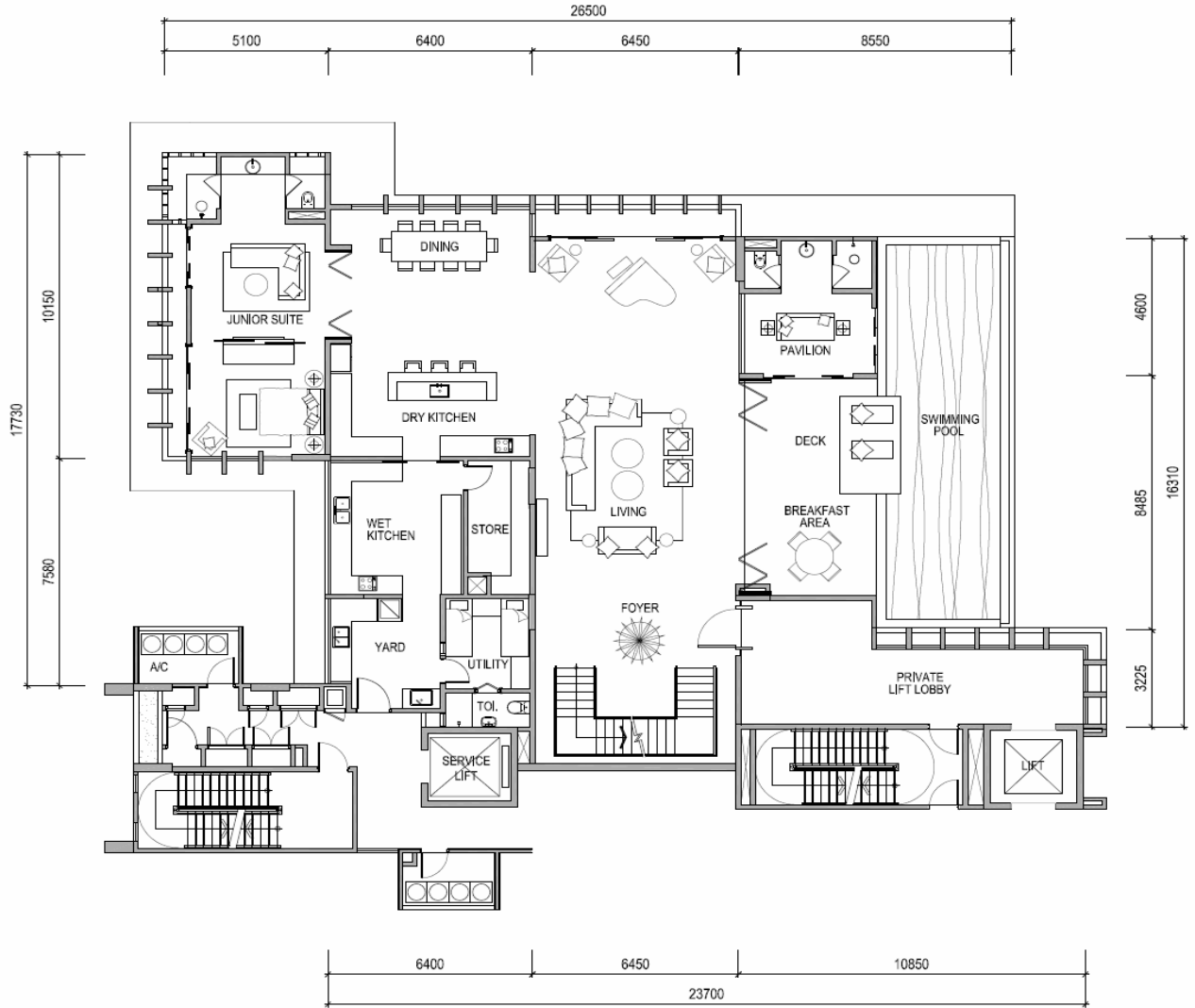


## TYPE A-D2 UPPER DUPLEX



**DISCLAIMER**

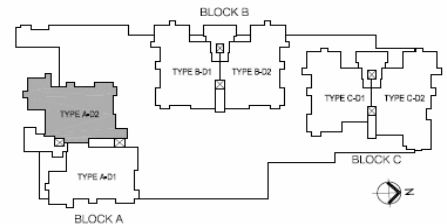
The materials exhibited are purely recommendations by our consultants and/or architects of materials that may be used in the units of Madge Mansions and the interior design and/or furniture layout and/or exterior landscaping exhibited in our models and display materials and appearing in our brochures are purely recommendations and creative ideas of our consultants and/or architects to assist you in designing your own home. The same is not reflective of and does not represent the actual unit to be delivered to you and as such shall not be construed or deemed to be a representation by the developer in any way whatsoever. Purchasers are advised to refer to actual information, specifications or plans as will be inserted in the Sale & Purchase Agreement entered into between the developer & the purchaser. All drawings are merely artist impressions only.



**TYPE A-D2 LOWER DUPLEX**

UNIT AREA : 7,901sqft

(excludes Private Lift Lobby area of 377sqft)



**DISCLAIMER**

The materials exhibited are purely recommendations by our consultants and/or architects of materials that may be used in the units of Madge Mansions and the interior design and/or furniture layout and/or exterior landscaping exhibited in our models and display materials and appearing in our brochures are purely recommendations and creative ideas of our consultants and/or architects to assist you in designing your own home. The same is not reflective of and does not represent the actual unit to be delivered to you and as such shall not be construed or deemed to be a representation by the developer in any way whatsoever. Purchasers are advised to refer to actual information, specifications or plans as will be inserted in the Sale & Purchase Agreement entered into between the developer & the purchaser. All drawings are merely artist impressions only.